

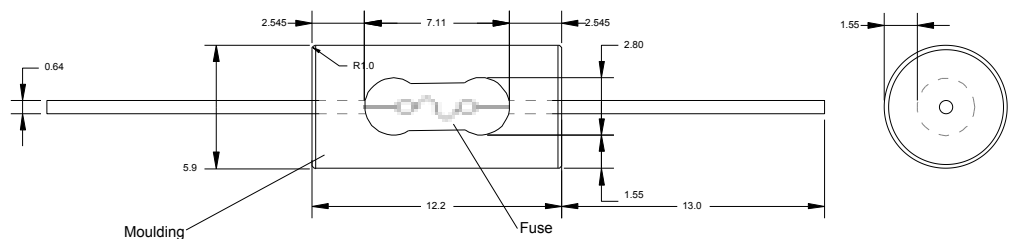
## Over-moulded Axial Lead Fuses

**ATEX/IEC Intrinsically Safe Fuse · 125 VAC · Quick Blow**

### ISF012 Series Fuse Based on Littelfuse 251 series Fuse



#### Dimensions:



#### Features

- Littelfuse 251 series based fuse for Intrinsically Safe applications
- Pre-encapsulated by over-moulding in Nylon 66 with a Comparative Tracking Index (CTI) of 600
- Certified to IEC/EN 60079-11
- Eliminates the need to encapsulate fuses in circuit and possibly the need to encapsulate a circuit altogether
- More than 10 mm creepage distance between leads
- Suitable for Mining as well as Surface applications
- Overmoulded fuse is fully RoHS compliant.
- Breaking Capacity of 300A @125 VDC and 50A @125 VAC

ISF012 ISSUE 1

## Over-moulded Axial Lead Fuses

**ATEX/IEC Intrinsically Safe Fuse · 125 VAC · Quick Blow**

### ISF012 Series Fuse Based on Littelfuse 251 series Fuse

## Specification

Source Fuse	Littelfuse 251 series fuse
Fuse rating	See Littelfuse data sheet 251 .
Lead arrangement	Axial
Over-moulding (encapsulating) material	Polyamide
Minimum insulating thickness	> 1mm
Creepage distance between leads	> 10mm
Comparative tracking Index	275 or greater
Colour	Blue with identifying coloured marks

## Ordering Information

Part Number	Littelfuse Part No.	Ampere Rating	Colour Coding
ISF012/062	0251.062	0.062	Silver
ISF012/125	0251.125	0.125	White
ISF012/200	0251.200	0.20	Black
ISF012/250	0251.250	0.25	Red
ISF012/375	0251.375	0.375	Yellow
ISF012/500	0251.500	0.50	Orange
ISF012/750	0251.750	0.75	Green
ISF012/001.	0251001.	1.00	Violet
ISF012/1.25	02511.25	1.25	White/Silver
ISF012/01.5	02511.5	1.50	Black/Silver
ISF012/002.	0251002.	2.00	Red/Silver
ISF012/02.5	025102.5	2.50	Yellow/Silver
ISF012/003.	0251003.	3.00	Orange/Silvery
ISF012/03.5	025103.5	3.50	Green/Silver
ISF012/004.	0251004.	4.00	Violet/Silver
ISF012/005.	0251005.	5.00	Silver/Silver
ISF012/007.	251007	7.00	White/White
ISF012/010.	251010	10.00	Black/Black

For all other information on fuse ratings please refer to Littelfuse Data Sheet - 251/253 Series


ISF012 ISSUE 1

## Over-moulded Axial Lead Fuses

**ATEX/IEC Intrinsically Safe Fuse · 125 VAC · Quick Blow**

### ISF012 Series Fuse Based on Littelfuse 251 series Fuse

#### Certification Details

Certificates: International European	IECEX SIR 07.0050U Sira 05ATEX2274U
Certification Code	Ex ia IIC Ga                      Ex ia I Ma Ex [ia] (Ga)                      Ex [ia] (Ma)
Marking required by Directive 94/9/EC	I M1                      II 1 G  I (M1)                      II (1) G
Ambient range:	-50°C to +93°C (I <sub>N</sub> = 5 A max) -50°C to +80°C (I <sub>N</sub> = 7 A max) -50°C to +45°C (I <sub>N</sub> = 10 A max)
Maximum Installed Circuit Voltage	125 Volts (uncoated)

#### Special Conditions for Safe Use

Mounting of fuse	The mounting of the fuse shall be such that its creepage and clearance distances comply with table 5 of IEC 60079-11:2011.
The maximum external surface temperature rise of the fuses	Up to 10 A = 149.1 K Up to 7 A = 112.5 K Up to 5 A = 88.5 K
Marking	Due to size limitations, the marking shown on the actual fuses is limited. The full information is shown on the product packaging label and detailed in this data sheet. Therefore, the user/installer shall refer to these items in order to determine the suitability of the particular fuse before use.

ISF012 ISSUE 1